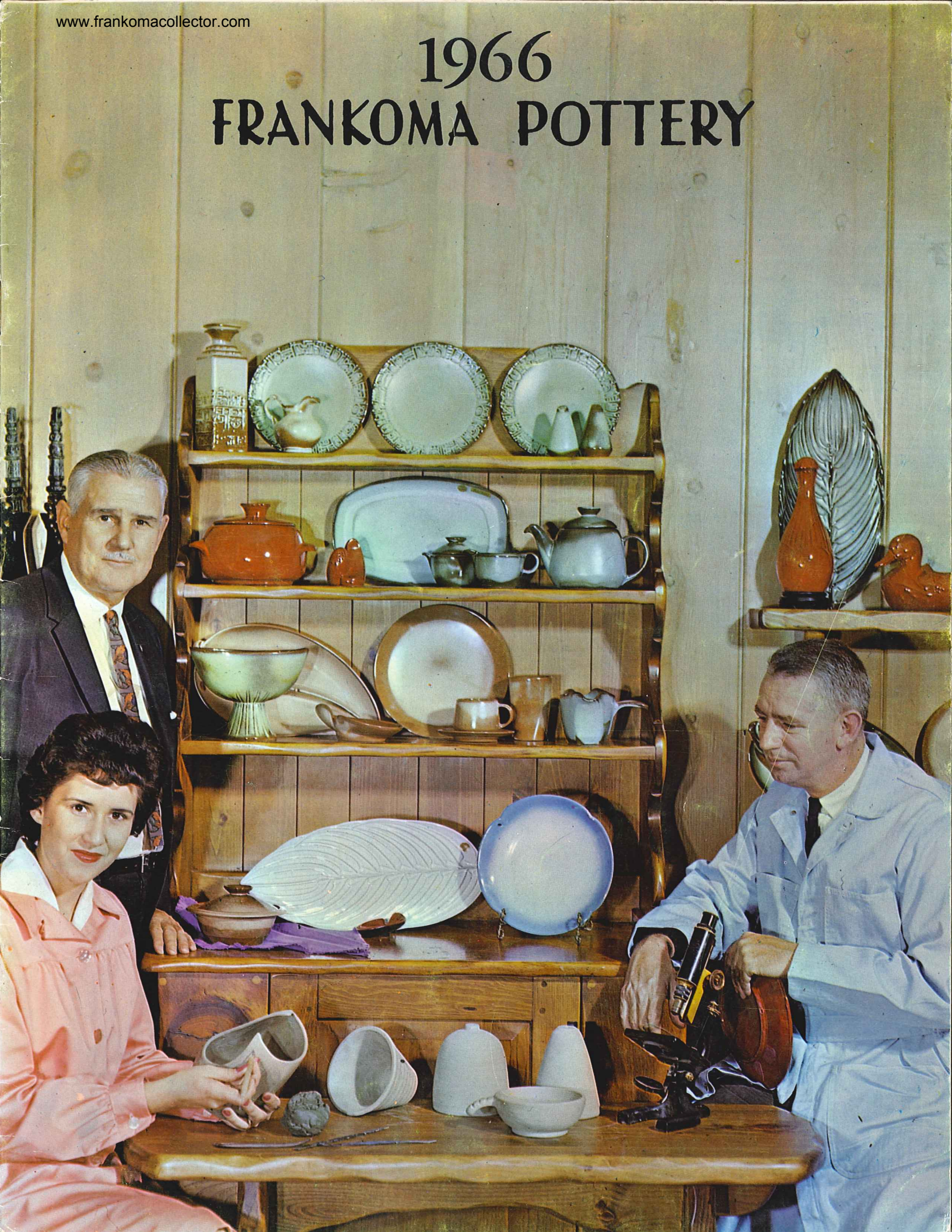


# 1966 FRANKOMA POTTERY







1



2



3

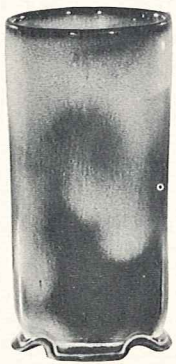


4

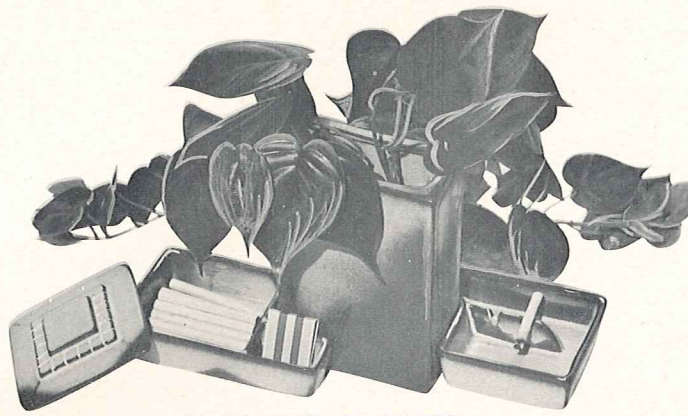
1. Mrs. John Frank with vase No. 72; color, Woodland Moss.  
 2. 236 bowl; color, Flame.

3. T11 Palm leaf; color, Flame.  
 4. 7JH Aztec bottle — 113 dancer; color, white.

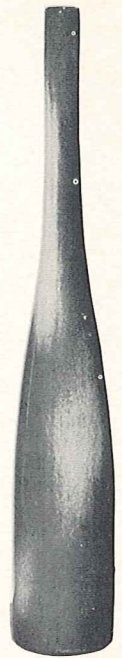




73-9" FOOTED CYLINDER-2.50



63S-"MR. AND MRS. SET"-6.00 BOXED  
KING SIZE CIGARETTE BOX WITH LID  
SAFETY ASHTRAY 7" PILLOW VASE



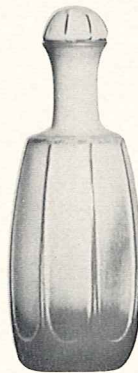
F55-17" WINE BOTTLE-3.50



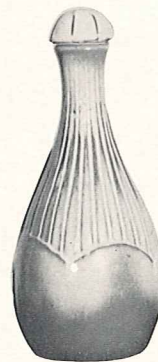
302-CANDLE VASE-1.50



237-9" POD VASE-2.50

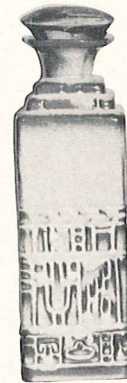


836T

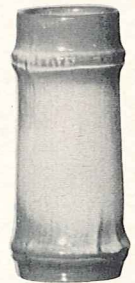


837T

9" BOTTLE VASES-WITH LID-2.00



7JH



T2-6 1/2" BAMBOO VASE-1.00



21-8" FREE FORM VASE-2.00



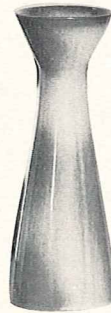
31-6" BUD VASE-.75



32-4" BUD VASE-.75



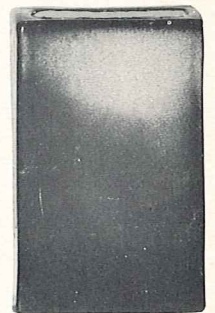
20-6" BUD VASE-1.00



28-6 1/2" BUD VASE-1.00



43-8" BUD VASE-1.00



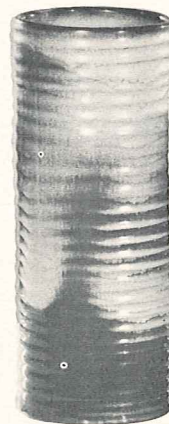
63-7" PILLOW VASE-2.00



77A-17" FIRESIDE PITCHER-10.00



77-17" FIRESIDE VASE-10.00



72-10" RINGED CYLINDER-2.50



70-8 1/2" RINGED JARDINIERE-5.00



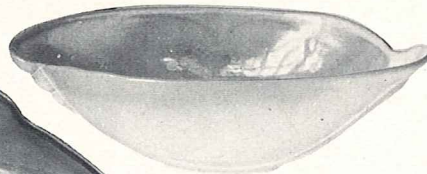


226-11" LEAF-2.00

227-17" LEAF-5.00

**LEAF BOWLS**

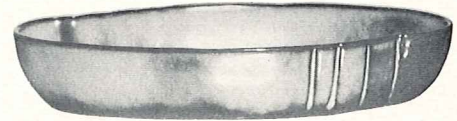
225-7" LEAF-1.00



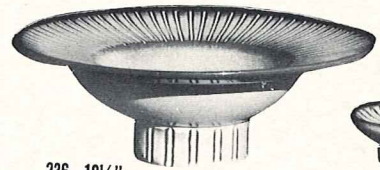
202-11" BOWL-2.00



201-9" BOWL-2.00



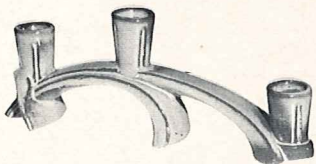
205-10" BOWL-2.00



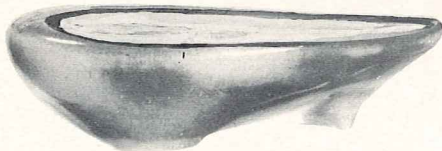
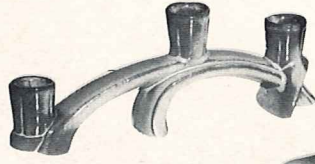
236-10 1/2" PEDESTALLED BOWL-3.50



301-CANDLE HOLDER-2.00 PR.



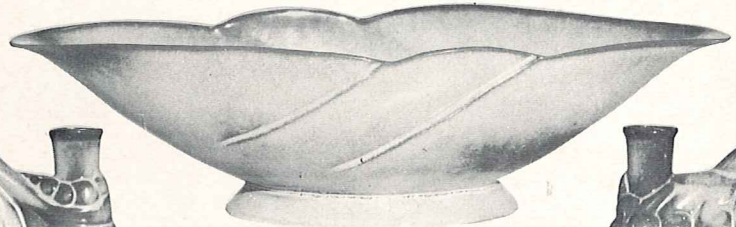
306-TRIPLE CANDLE HOLDER-3.00 PR.



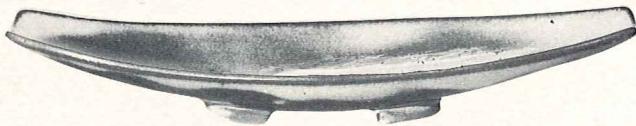
231-11" BOWL-2.50



304-DOUBLE CANDLE HOLDER-2.00 PR.



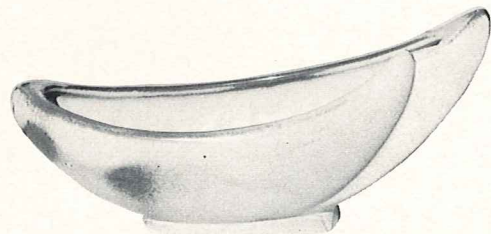
219-CENTERPIECE BOWL-5.00



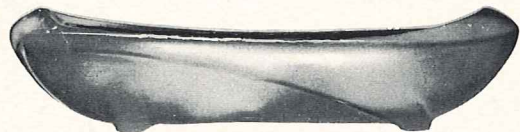
F88-15" SHALLOW BOWL-3.50



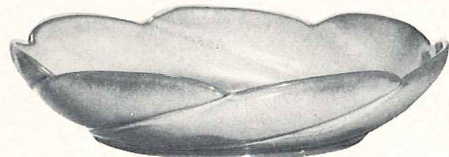
305-SINGLE CANDLE HOLDER-2.00 PR.



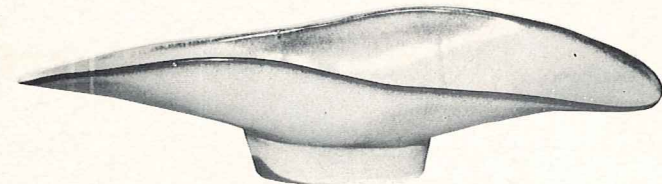
211-12" CRESCENT BOWL-2.50



45-12" OBLONG PLANTER-2.00



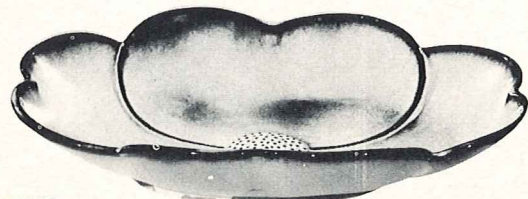
218-12" SCALLOPED BOWL-3.00



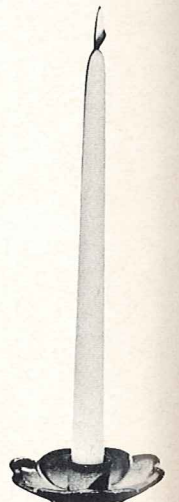
F91-17" FREE FORM BOWL-5.00



300-DOGWOOD CANDLE HOLDER-2.00 PR.

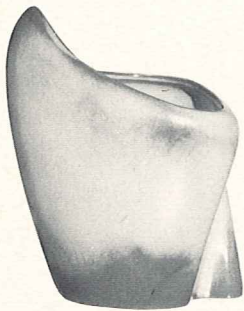


200-12" DOGWOOD FLOWER BOWL-4.00





(Appropriate Containers For Beautiful Flower Arrangements)



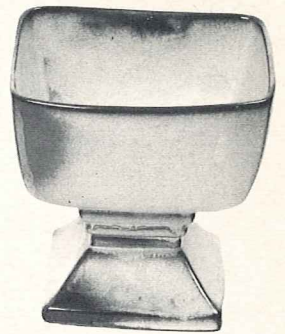
6-7" FREE FORM VASE-1.80



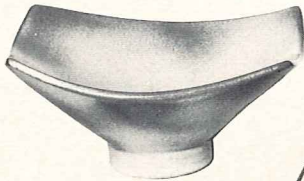
35-6" FOOTED BOWL-1.00



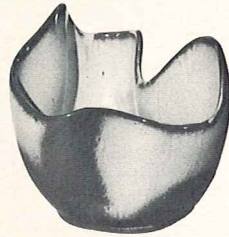
190-6" WALL VASE-1.00



23-7" SQ. PEDESTAL VASE-3.00



F34-8" RICE BOWL-2.00



F29-6" DRAPERY VASE-1.50



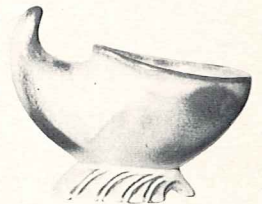
59-CANTEEN 6 1/2"-2.00



F33-7" FLUTED PLANTER-2.00



F35-7" PEDESTALLED VASE-2.00



57S-6" CORNUCOPIA-1.00



F52-7" PEDESTALLED URN-2.50



OLD FASHIONED PITCHER SET  
F30A-5 1/2" PITCHER-1.50  
F30B-7" BOWL-1.50



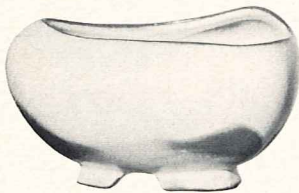
40A-SMALL PITCHER-1.00  
40B-BOWL-1.00



7-7" VASE-1.50



57-7" CORNUCOPIA-1.50



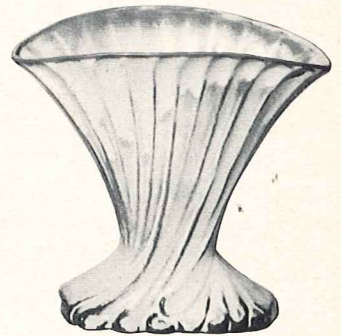
234-FOOTED FREE FORM BOWL-2.00



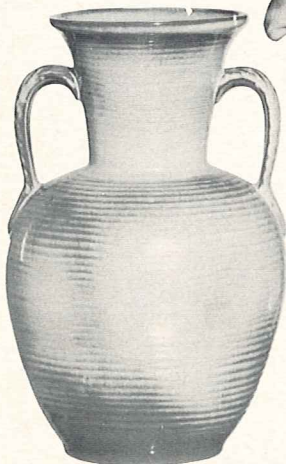
222-12" CORNUCOPIA-3.00



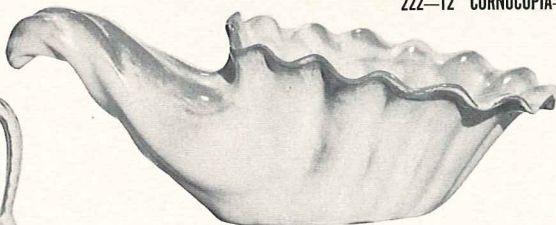
65-8" HEXAGONAL VASE-2.00



19-7" FAN VASE-2.00



71-10" LEAF HANDLED VASE-3.50



215-15" CORNUCOPIA-7.00



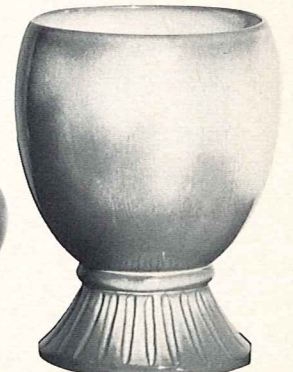
55-5" ROUND JAR-1.50



22S-5" FOOTED ROUND VASE-1.00



22-7" FOOTED ROUND VASE-2.00



52-8" URN-3.00

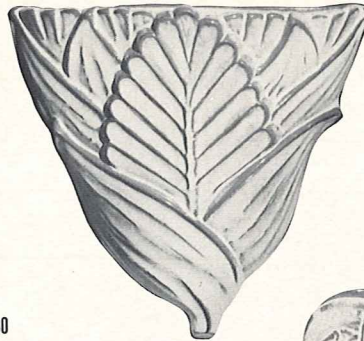




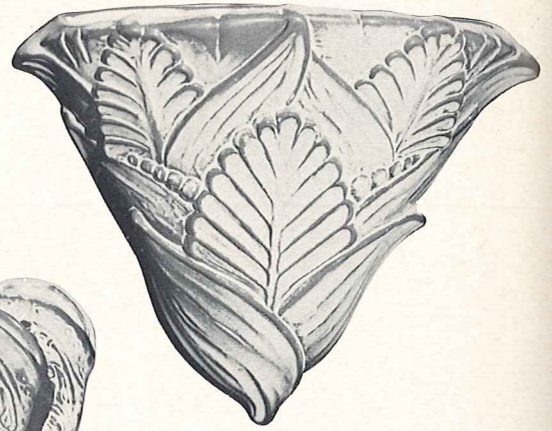
203-10" CACTUS BOWL-2.00



83-4" CORK BARK PLANTER-1.00



197-8 1/2" WALL VASE-2.50



196-12" WALL VASE-5.00



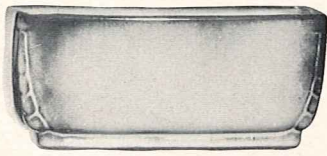
77-4" COCONUT PLANTER-1.00



133-6 1/2" BOOT-1.50  
134-4" BOOT-1.00



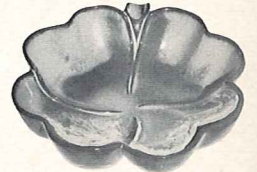
433-PLANTER BOOT BOOKENDS-5.00 PR.



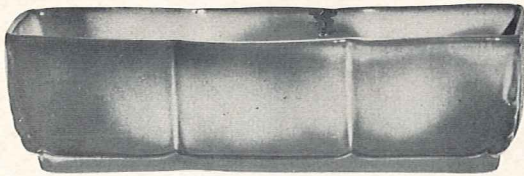
14-8" PLANTER-1.50



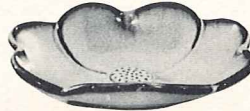
167-HORSE SHOE-.75



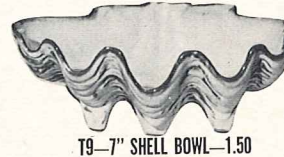
223-6" FOUR LEAF CLOVER-1.00



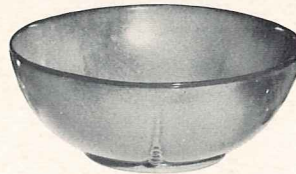
15-12" PLANTER-2.50



204-6" DOGWOOD TRAY-1.00



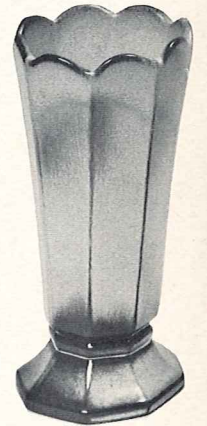
T9-7" SHELL BOWL-1.50



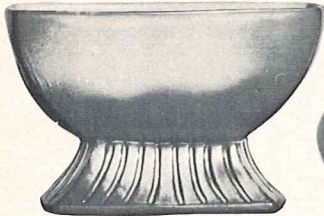
224-8" ROUND BOWL-2.00



473-6 1/2" SHELL TRAY-1.00



64-9" OCTAGONAL VASE-2.00



17-8"x3" PLANTER-2.00



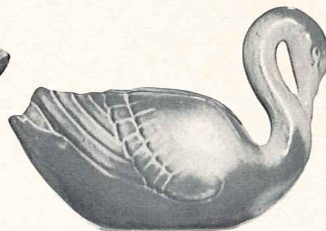
212-8" ROUND BOWL-1.50



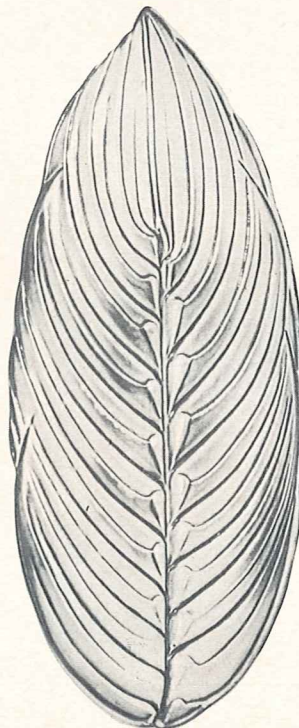
826-6" BOWL-1.00



A8-8 1/2" JARDINIERE FOR 6 1/2" POT-2.00



228-7 1/2" SWAN-2.00



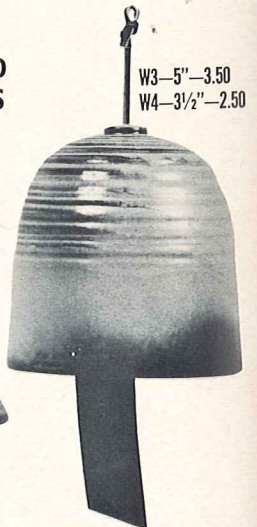
T11-17" PALM LEAF TRAY-5.00

W1-5"-3.50  
W2-3 1/2"-2.50

**WIND BELLS**



With Ceramic Clapper and Copper Vane

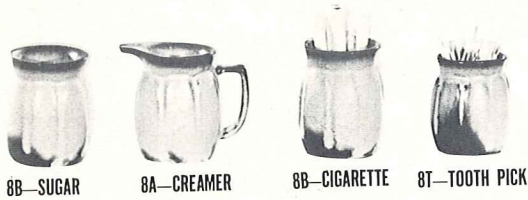


W3-5"-3.50  
W4-3 1/2"-2.50

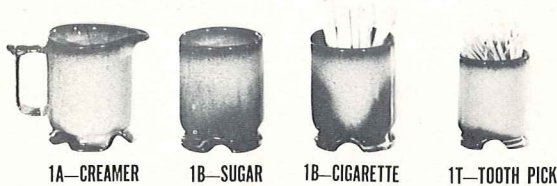


208-11" MALLARD PLANTER-3.50





8B-SUGAR 8A-CREAMER 8B-CIGARETTE 8T-TOOTH PICK



1A-CREAMER 1B-SUGAR 1B-CIGARETTE 1T-TOOTH PICK

**MINIATURES—.75 EACH**



7TR-6" CHEROKEE ALPHABET-1.00



94TRC-6" CATTLE BRAND-1.00



94TRH-6" HORSE SHOE-1.00



2TR-EAGLE-1.00



3TR-SPANISH IRON-1.00



94TR-6" ROOSTER-1.00

**FELTED TRIVETS**



M1-15 oz. STEIN-1.50



1C-CUP



8C-CUP



553-CREAMER

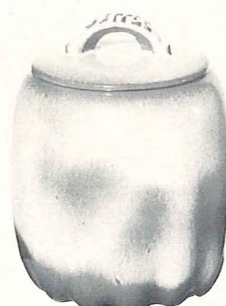


504-SUGAR

**MINIATURES—.75 EACH**



25T-TEA-2.50



25C-COFFEE-3.50



25S-SUGAR-4.00

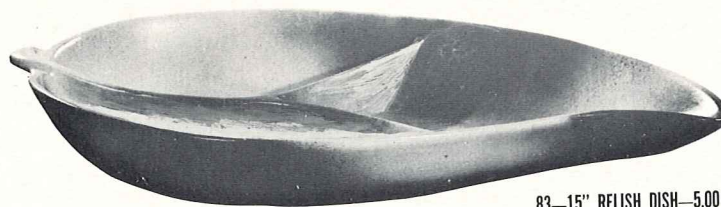
CANNISTER SET-4 PIECES-14.00



25F-FLOUR-4.50  
25K-COOKIE-4.50



82S-COFFEE CARAFE COMPLETE-6.00  
82-CARAFE AND LID ONLY-4.00



83-15" RELISH DISH-5.00



803-HONEY JAR W/LID-1.50



838-10 OZ. PITCHER-1.00



833-24 OZ.-1.50



8-24 OZ.-1.50



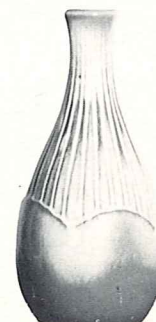
835-24 OZ.-1.50



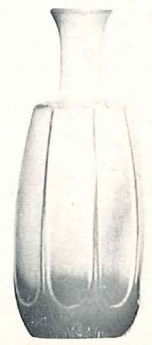
831-16 OZ.-1.50



29-24 OZ. BOTTLE-1.50



837-24 OZ. BOTTLE-1.50



836-24 OZ. BOTTLE-1.50

JUGS FOR HONEY-SYRUP-SALAD DRESSING, ETC.-

SIZES ARE APPROXIMATE AND MAY VARY SLIGHTLY



# Westwind

## PATTERN

AVAILABLE ONLY IN: Peach Glow, Woodland Moss, Prairie Green and White Sand.



**6LS-45 PC. SERVICE SET, BOXED—\$46.00**

- 8—Cups
- 8—Saucers
- 8—14 Oz. Bowls
- 8—7" Plates
- 8—10" Plates
- 1—13" Platter
- 1—Creamer
- 1—Sugar
- 1—Sugar Lid
- 1—Serving Bowl

**6TS-20 PC. STARTER SET, BOXED—\$20.00**

- 4—Cups
- 4—Saucers
- 4—7" B & B Plates
- 4—10" Plates
- 4—14 Oz. Chili-Soup Bowls

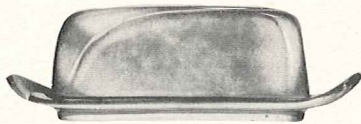
SIMPLICITY in its truest form — that's "Westwind." The carefully broken line of the shallow coupe shape is the key to the pattern. The simple unbroken line of the cup handle, with its broad thumb rest, combines grace and security.

The large and small open bakers have rolled rims for safety and ease of handling. Cleaning is no task. Much care is exercised in making these "easy-grip" knobs on the lids. This oven-to-table pottery is truly the gourmet's delight.

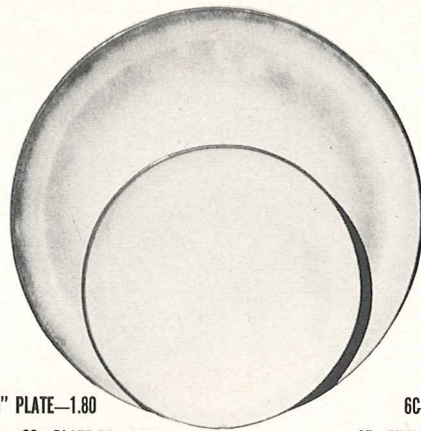
The homemaker today appreciates the warm, cordial earthen colors in this unique pottery. Its waxy textures are so lovely to the touch. Such tableware should be selected for its artistic qualities as well as its serviceability.

"Westwind," with its basic simple lines, permits freedom in expression of personality which is so important in smart contemporary homes. You'll LOVE "Westwind" —and, of course, it is all ovenproof.





\*4K—BUTTER DISH—2.00



6F—10" PLATE—1.80

6G—PLATE 7"—1.00



6B—SUGAR WITH LID—1.50



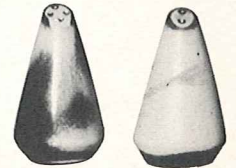
6A—9 OZ CREAMER—1.00



\*6VT—2½ QT. TUREEN—4.00



6C—CUP—.90  
6E—5" WELLED SAUCER—.75



\*6H—SALT & PEPPER—1.50



\*6V—2½ QT. BAKER—4.00



\*5LC—6 OZ. JUICE—.75



\*5L—12 OZ. TUMBLER—.90



\*6CL—DOUBLE COFFEE—1.00



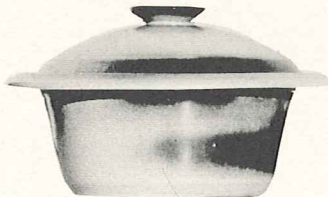
\*6I—1 QT. PITCHER—2.00



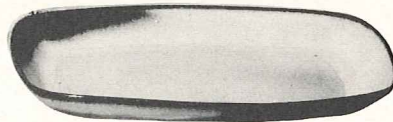
\*6O—2 QT. PITCHER—2.50



\*6T—6 CUP TEA POT—2.50



\*6VS—1½ QT. BAKER—3.00



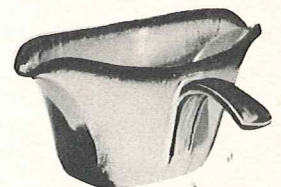
\*5QS—13" STEAK PLATE (SHALLOW PLATTER)—2.00

\*6P—11" STEAK PLATE—1.80

\*5PS—9" TRAY—1.50



\*6J—2 CUP TEAPOT—2.00



\*6S—TWO SPOUT GRAVY—2.00



\*6U—18 OZ. BAKER-FOR-TWO—2.00  
A COVERED CANDY DISH

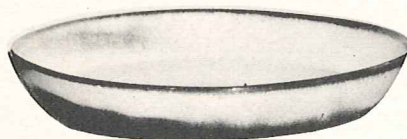


\*6P—6 OZ. BEAN POT—.75

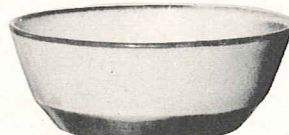


6X—14 OZ. CHILI SOUP—1.00

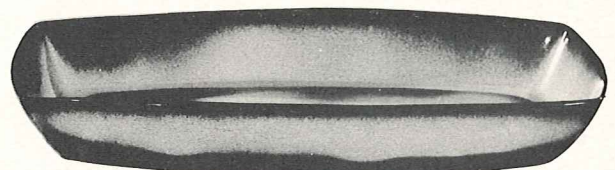
6XS—10 OZ. FRUIT—.80



\*9I—10" BAKING DISH—2.00

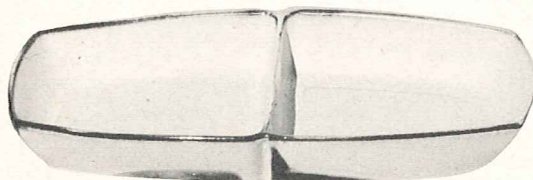


\*6N—1 QT. BOWL—1.50

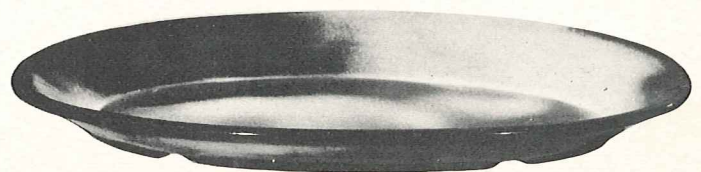


\*5P—17" DEEP PLATTER—5.00

\*5Q—13" DEEP PLATTER—2.50



5QD—13" DIVIDED BOWL—2.50



\*TP—17" OVAL PLATTER—5.00



# MAYAN-AZTEC Pattern

AVAILABLE ONLY IN: Desert Gold, Prairie Green, White Sand and Woodland Moss.

## 71S—45 PC. SERVICE SET, BOXED—\$46.00

- 8—Cups
- 8—Saucers
- 8—14 Oz. Bowls
- 8—7" B & B Plates
- 8—10" Plates
- 1—13" Platter
- 1—Creamer
- 1—Sugar
- 1—Sugar Lid
- 1—Serving Bowl



## 7TS—20 PC. STARTER SET, BOXED—\$20.00

- 4—Cups
- 4—Saucers
- 4—7" B & B Plates
- 4—10" Plates
- 4—14 Oz. Chili-Soup Bowls

1,000 YEARS before Columbus "discovered" America, there flourished a civilization in this country whose artistic, social, and religious standards far surpassed any European peoples up to that time. Many archeologists not only compare the art and architecture of the Mayans and Aztecs favorably with that of ancient Egypt, but in many respects prefer their achievements in art importance. THESE were the FIRST Americans.

It is well established that the nucleus of American Indian tribes spread from the Great Southwest region. Our particular interest is in those who went South—the Mayans and Aztecs. They have given to the world some of its richest art treasures. The "golden age" of Mayan Art, in which they developed their pantheon, built their temples, perfected their Arts, social structure and government, occupied the first few centuries after Christ.

The Great Temple in Copan, Yucatan, built to the War Diety, was completed just before the Spanish invasion. The temple compound covered almost a quarter square mile, comprising seventy-eight buildings — a most stupendous achievement and a monument to architectural beauty.

The most widely known of the Mayan and Aztec arts are the numerous hieroglyphs. They were used profusely on buildings, altars, monuments, and other such places, not only for embellishments, but for the recording of information. The decorations on the stairway of Copan alone were composed of over 2,500 different glyphs. Freehand methods prevailed entirely, for their art was their only written language.

Pottery has always evidenced every strata of culture. Fragments of pottery have been found where all other records have been destroyed, even in prehistoric times. Throughout the long history of all Indian tribes, pottery has been the universal art. The pottery of the ancient Southwestern Indians challenges comparison in color, form, and mastery of line with that of the Greek and Orientals.

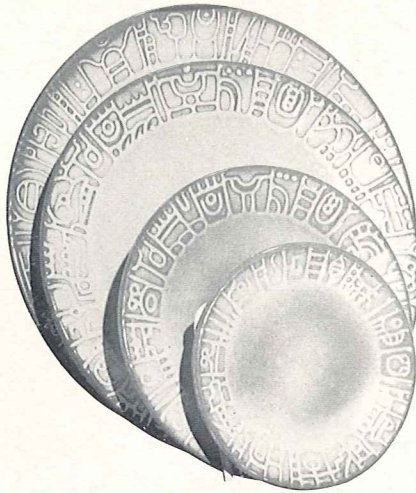
It is through the inspiration of this wealth of beauty that FRANKOMA has created its Mayan-Aztec tableware.





7V-2 QT. BAKER-3.00

- 7FL-10" PLATE-1.80
- 7F-9" PLATE-1.50
- 7G-7" PLATE-1.00
- 7E-5" SAUCER-.75



7D-60 OZ. PITCHER-3.00



7W-3 QT. BAKER-4.00



7B-SUGAR WITH LID-1.50



7A-6 OZ. CREAMER-1.00



7C-CUP-.90



7M-14 OZ. MUG-1.50



7CL-8 OZ. MUG-1.00



7XO-8 OZ. FRUIT-.80



7U-10 OZ. BAKER-1.50



7QS-13" STEAK PLATTER (SHALLOW PLATTER)-2.00



7X-14 OZ. CHILI-SOUP-1.00



7HS-SALT & PEPPER-1.50



7Q-13" DEEP PLATTER-2.50



7XL-20 OZ. SALAD-1.25



7PS-9" TRAY-1.50



\*7FC-15" CHOP PLATE-7.00



7N-1 QT. VEGETABLE BOWL-1.50



7T-6 CUP TEA POT-2.50



7P-17" DEEP PLATTER-5.00



7J-2 CUP TEAPOT-2.00

THIS PAGE AVAILABLE IN PRAIRIE GREEN, DESERT GOLD, WHITE SAND AND WOODLAND MOSS, EXCEPT WHERE NOTED\*

\*AVAILABLE IN ALL COLORS-ADD 50% FOR FLAME-SEE BACK COVER

SIZES ARE APPROXIMATE AND MAY VARY SLIGHTLY.



# LAZYBONES Pattern

AVAILABLE ONLY IN: Brown Satin, Desert Gold and Prairie Green.



**4LS-45 PC. SERVICE SET, BOXED—\$46.00**

- |                |                |
|----------------|----------------|
| 8—Cups         | 1—13" Platter  |
| 8—Saucers      | 1—Creamer      |
| 8—14 Oz. Bowls | 1—Sugar        |
| 8—7" Plates    | 1—Sugar Lid    |
| 8—10" Plates   | 1—Serving Bowl |

**4TS-20 PC. STARTER SET, BOXED—\$20.00**

- |                           |
|---------------------------|
| 4—Cups                    |
| 4—Saucers                 |
| 4—7" B & B Plates         |
| 4—10" Plates              |
| 4—14 Oz. Chili-Soup Bowls |

Our American homes are being designed and built so that home makers can take advantage of the many modern conveniences, yet develop their own personalities in color and styling.

The furnishings for these contemporary homes are practical and simplified. They must be selected carefully to preserve a cordial atmosphere, which we all wish for our family and friends.

Frankoma was sensitive to these trends when this new dinnerware was being designed. The atmosphere surrounding LAZYBONES is relaxing, for you are influenced by its free flowing sculptured lines. As you accept the invitation to handle and caress each piece, you will love the way

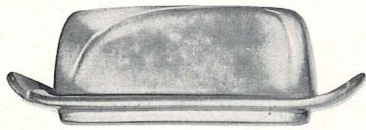
they fit the contour of your hands, for immediately they become a part of you.

Food cooked in Lazybones can go from the oven to the table—and there are so many uses for each piece. They are designed to serve!

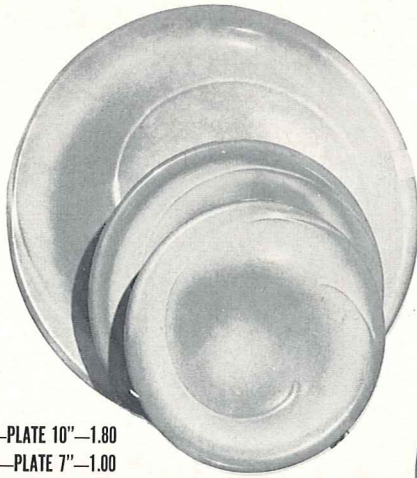
Notice the array of Frankoma's colors. They are the gourmet's delight, for they all compliment your food and share in making every meal an occasion. The shapes themselves are both practical and beautiful.

When you set your table with Lazybones, you are set to relax, and enjoy your share of casual living. It will be the "Talk of the Table" with your family and friends.





\*4K—BUTTER DISH—2.00



4F—PLATE 10"—1.80  
4G—PLATE 7"—1.00  
4E—5" SAUCER—.75



\*4S—BONE DISH 6 1/2"—1.00



4X—CEREAL 16 OZ.—1.00



\*5L—12 OZ. TUMBLER—.90



\*5LC—6 OZ. JUICE—.75



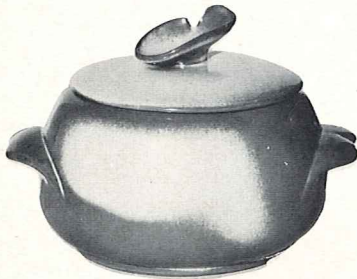
4C—CUP—.90



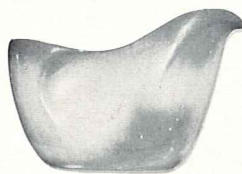
\*4Y—6" SPOON HOLDER—1.00



\*4H—SALT & PEPPER—1.50



\*4V—BAKER 2 QT.—3.00



4A—8 OZ. CREAMER—1.00



4B—SUGAR WITH LID—1.50



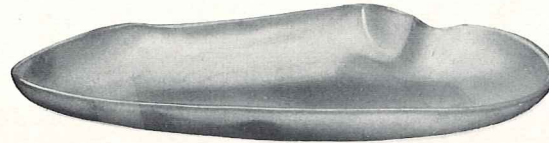
\*4M—MUG 18 OZ.—1.50



4Z—6" SOUP—1.00



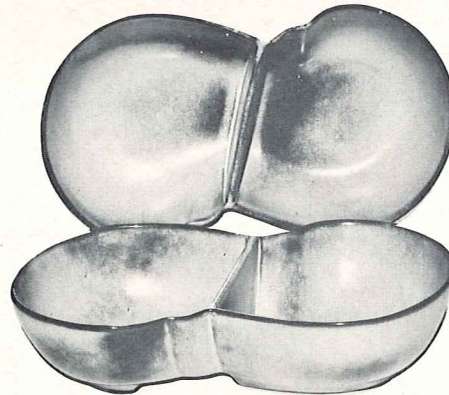
\*4N—VEGETABLE 24 OZ.—1.50



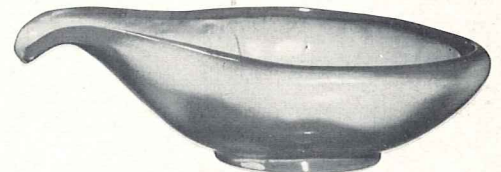
\*4P—13" PLATTER—2.50



\*4W—BAKER 3 QT.—4.00



\*4QD—11" DIVIDED BOWL—2.50



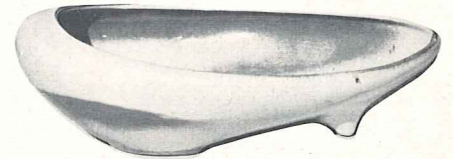
\*214—SERVICE BOWL 12"—2.50



4SC—11 oz. SOUP CUP—1.50



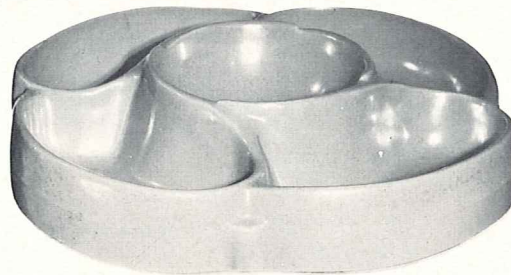
\*BP—6 OZ. BEAN POT—.75



\*231—SERVICE BOWL 11"—2.50



\*4XL—24 OZ. SALAD OR GUMBO—1.25



\*818—5 SECTION LAZY SUZETTE ON BALL BEARING BASE—12"—7.00



\*4D—PITCHER 2 QUART—3.00

THIS PAGE AVAILABLE IN PRAIRIE GREEN, DESERT GOLD AND BROWN SATIN, EXCEPT WHERE NOTED\*

\*AVAILABLE IN ALL COLORS—ADD 50% FOR FLAME—SEE BACK COVER

SIZES ARE APPROXIMATE AND MAY VARY SLIGHTLY.



# WAGON WHEELS Pattern

AVAILABLE ONLY IN: Desert Gold and Prairie Green.



**94LS—45 PC. SERVICE SET, BOXED—\$46.00**

- 8—Cups
- 8—Saucers
- 8—14 Oz. Bowls
- 8—7" Plates
- 8—10" Plates
- 1—13" Platter
- 1—Creamer
- 1—Sugar
- 1—Sugar Lid
- 1—Serving Bowl

**94TS—20 PC. STARTER SET, BOXED—\$20.00**

- 4—Cups
- 4—Saucers
- 4—7" B & B Plates
- 4—10" Plates
- 4—14 Oz. Chili-Soup Bowls

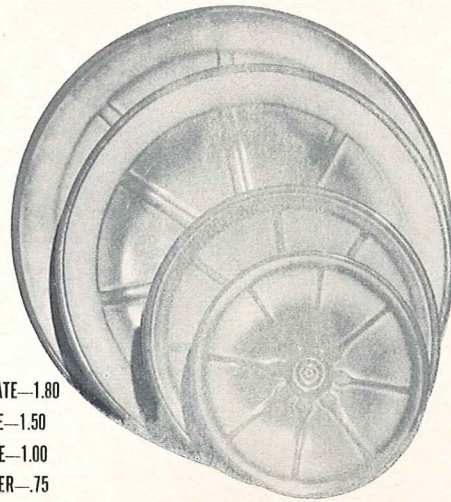
THE ROMANCE OF THE WEST lives on with our WAGON WHEEL Pottery! The pitchers are quaint and practical. The cup is the hub of a wheel, and the "good luck" horseshoe makes the handles for the baker. There are bands of cattle brands on the platters and bowls. The whole set is an application of the fine designs one can find on any ranch.

A most colorful part of the history of the Southwest is the cattle industry, and the rancher's "coat of arms" is his "cattle-brand." The covered wagon, "wagon wheels," horses, the cowboys, cattle, the "little dogies," and above all, the "cattle-brand" are symbols of this natural industry.

Many of these brands are fine designs, and most of them have a definite meaning. Some are the initials of the owner, others may refer to hills on the ranch, the number of acres he owns, the number in the family, his monogram, key, a hat, or any one of a thousand items of interest. Each brand is usually registered in the county in which it is used.

We are proud to take this opportunity to eulogize these pioneers of the Southwest, and include a number of these brands in decorating some of the pieces of our WAGON WHEEL set. Every piece is oven-proof.





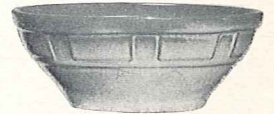
94FL-10" PLATE-1.80  
94F-9" PLATE-1.50  
94G-7" PLATE-1.00  
94E-5" SAUCER-.75



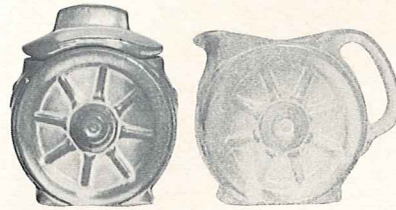
94H-SALT & PEPPER-1.50



94M-16 OZ. MUG-1.50



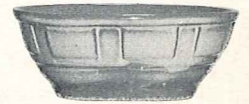
94XL-20 OZ. BOWL-1.25



94B-SUGAR WITH LID-1.50 94A-8 OZ. CREAMER-1.00



94C-5 OZ. CUP-.90



94X-14 OZ. CEREAL-1.00



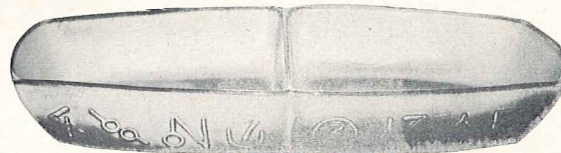
94V-2 QT. BAKER-3.00



94L-12 OZ. TUMBLER-.90



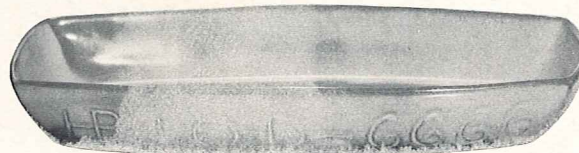
94XO-6 OZ. DESSERT-.80



94QO-13" DIVIDED BOWL-2.50



94W-3 QT. BAKER-4.00



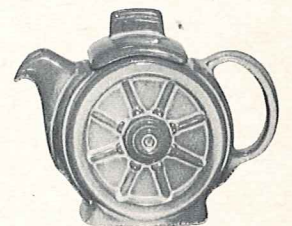
94Q-13" PLATTER-2.50



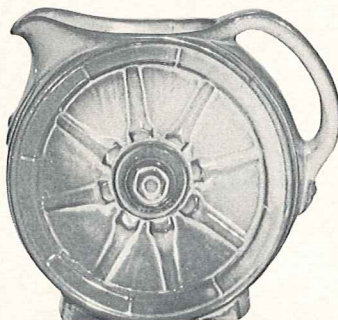
94N-1 QT. VEGETABLE BOWL-1.50



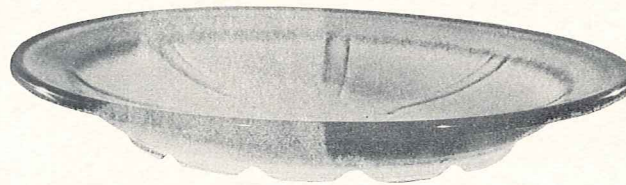
94P-17" PLATTER-5.00



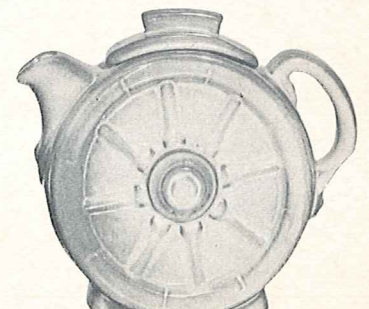
94J-2 CUP TEAPOT-2.00



94D-2 QT. PITCHER-2.50



94FC-15" CHOP PLATE-7.00



94T-6 CUP TEA POT-2.50

THIS PAGE AVAILABLE IN PRAIRIE GREEN AND DESERT GOLD.  
SIZES ARE APPROXIMATE AND MAY VARY SLIGHTLY.



# Plainsman Pattern

AVAILABLE ONLY IN: Woodland Moss, Desert Gold, Brown Satin and Prairie Green.



## 5LS-45 PC. SERVICE SET, BOXED-\$46.00

- |                |                |
|----------------|----------------|
| 8-Cups         | 1-13" Platter  |
| 8-Saucers      | 1-Creamer      |
| 8-14 Oz. Bowls | 1-Sugar        |
| 8-6½" Plates   | 1-Sugar Lid    |
| 8-10" Plates   | 1-Serving Bowl |

For thousands of years men have gloried in creating "atmosphere" around their favorite sport — eating. Harmonious and beautiful surroundings not only add to the pleasure of eating but make it a healthier pastime. We still lavish all we possibly can on our banquets and feasts, for we love to eat.

Men have always managed to devise some sort of receptacle to hold food, either raw or prepared, and the quality and value of his utensils depend more on his love of beauty and ability to create than the size of his purse. Of the many materials used throughout the centuries, in all countries of the world — iron, copper, brass, stone, wood, silver, and even gold, ceramics has remained the favorite of all eating vessels. Since the acceptance of "whiteware" in the sixteenth century, most fine tables have been set with "dinnerware" or "china." This is sometimes a white earthenware, or a compounded china body, or even a translucent true porcelain. Its quality depends on the selec-

## 5TS-20 PC. STARTER SET, BOXED-\$20.00

- |                           |
|---------------------------|
| 4-Cups                    |
| 4-Saucers                 |
| 4-7" B & B Plates         |
| 4-10" Plates              |
| 4-14 Oz. Chili-Soup Bowls |

tion and handling of the materials plus its Art value expressed in line, form and color.

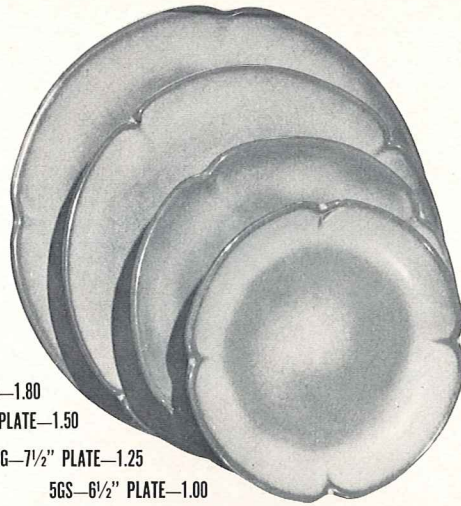
Today, from the crudest earthenware to the finest porcelain, we still choose CERAMICS of some kind for our table. Although we would not eliminate "whitewares," we love our modern pottery tableware. Why not? It is gay, happy, and colorful, and surely fits into our modern mode of living. It is with this in mind that we have created FRANKOMA TABLEWARE.

For one design we have gone to the Great Plains of the Southwest and offer you the "PLAINSMAN" pattern. Its well chosen, simple lines and sturdy shapes create an atmosphere benefitting its heritage. It is most appropriate "for fun or fashion." Every piece is oven-proof.





\*5V-2 QT. BAKER-3.00



5F-10" PLATE-1.80

5FS-9" PLATE-1.50

5G-7 1/2" PLATE-1.25

5GS-6 1/2" PLATE-1.00



\*5DC-DEMITASSE CUP-.75

\*5DE-DEMITASSE SAUCER-.75



5A-12 OZ. CREAMER-1.00



\*5W-3 QT. BAKER-4.00



\*5CL-12 OZ. MUG-1.00

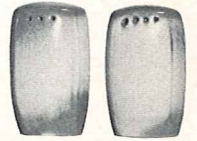


5B-SUGAR WITH LID-1.50

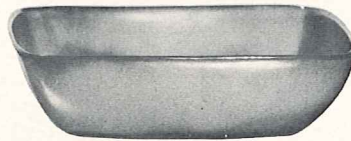


5C-CUP-.90

5E-5 1/2" SAUCER-.75



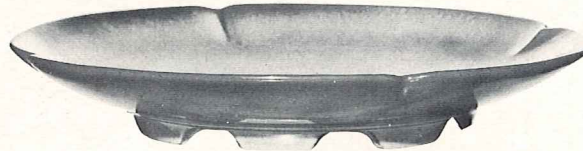
\*5HS-SALT & PEPPER-1.50



\*5NS-9" VEGETABLE-2.00



\*5N-4 1/2 QT. BOWL-5.00



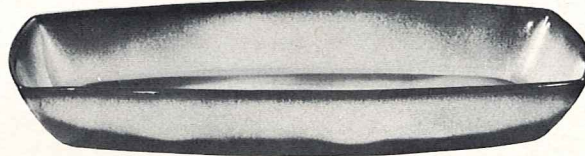
\*5FC-15" CHOP PLATE-7.00



\*5L-12 OZ. TUMBLER-.90



\*5LC-6 OZ. JUICE-.75



\*5P-17" PLATTER-5.00

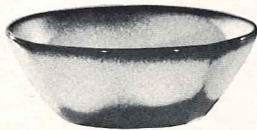
\*5Q-13" PLATTER-2.50



\*5DB-6 OZ. SUGAR-.75



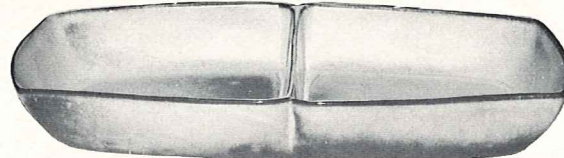
\*5DA-6 OZ. CREAMER-.75



5XL-20 OZ. BOWL-1.25

5X-14 OZ. CEREAL-1.00

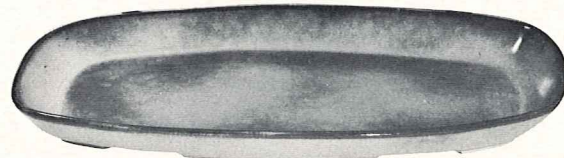
5XS-9 OZ. FRUIT-.80



5QD-13" DIVIDED BOWL-2.50



\*5TL-12 CUP TEAPOT-4.00



\*5QS-13" PLATTER-2.00

\*5PS-9" TRAY-1.50



\*5ND-9" CHEESE DIP-2.50



\*5S-20 OZ. GRAVY BOAT-1.50



\*5T-6 CUP TEAPOT-2.50



\*5M-16 OZ. MUG-1.50



\*5D-3 QT. PITCHER-3.50

THIS PAGE AVAILABLE IN BROWN SATIN, DESERT GOLD, PRAIRIE GREEN & WOODLAND MOSS, EXCEPT WHERE NOTED\*.

\* AVAILABLE IN ALL COLORS-ADD 50% FOR FLAME-SEE BACK COVER

SIZES ARE APPROXIMATE AND MAY VARY SLIGHTLY



ASH TRAYS AND ACCESSORIES



477



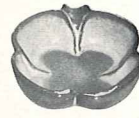
463



467



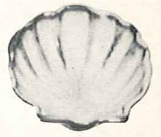
512



513



470

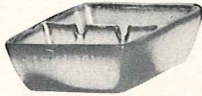


472

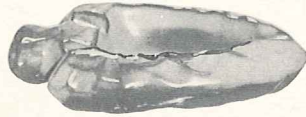
MINIATURE TRAYS 3" TO 4"—.75 EACH



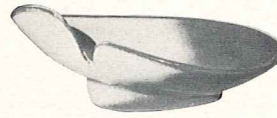
474—4" ROUND—1.00



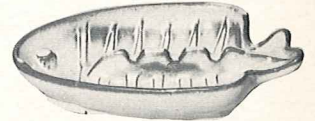
469—SAFETY ASHTRAY—.75



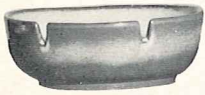
453—7" ARROW HEAD—1.00



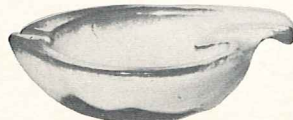
466—7" FREE FORM—1.00



T8—7" FISH—1.00



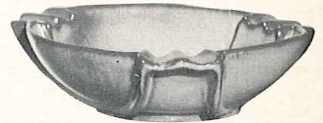
475—6" ROUND—1.50



452—7" FREE FORM—1.50



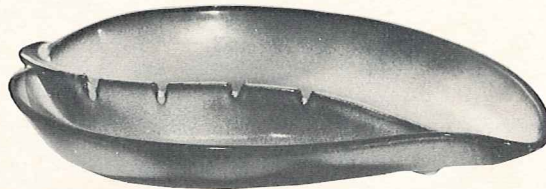
223—6" CLOVER LEAF—1.00



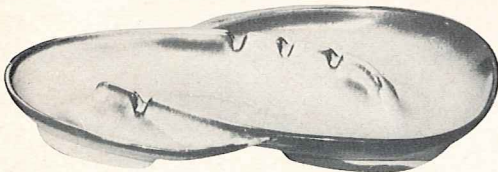
458—7" THREE SIDED—2.00



480—8" ROUND—3.00



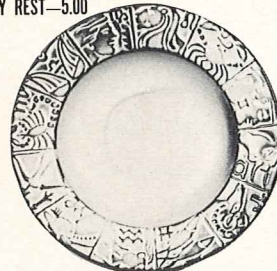
478—15" LEAF TRAY WITH SAFETY REST—5.00



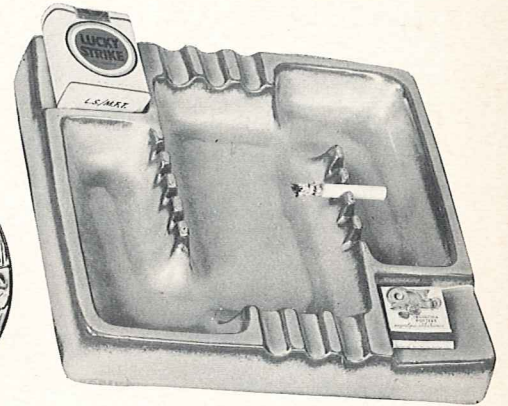
F203—13½" TEAR DROP—3.00



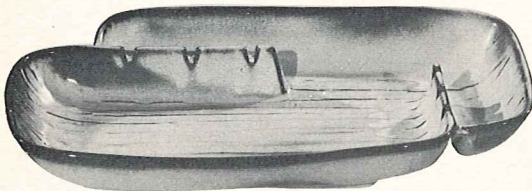
481—STAR TRAY—.75



488—7" TRAY—1.50



464—10½" SQUARE—5.00



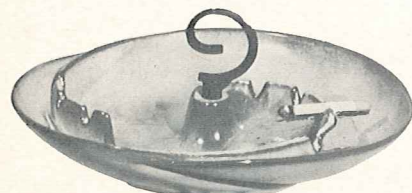
479—12" FREE FORM WITH SAFETY REST—5.00



8L—LIGHTER—3.00

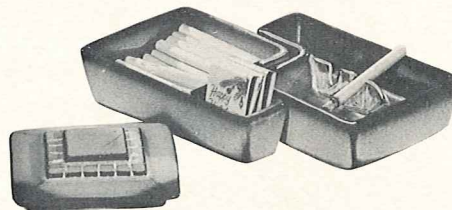


1L—LIGHTER—3.00



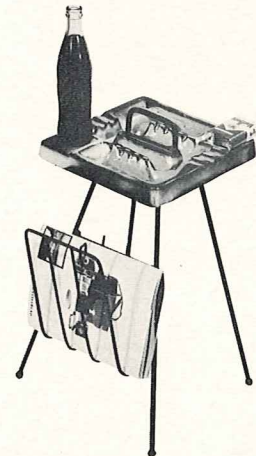
30—WITHOUT HANDLE—3.00

30T—10" ROUND ASH TRAY—3.50



63A—FITTED SAFETY ASHTRAY—1.50

63C—KING SIZE CIGARETTE BOX WITH LID—2.50



34M—REFRESHMENT AND ASH TRAY ON WROUGHT IRON STAND WITH MAGAZINE RACK—10.00



1982  
1/7  
68

**POTTERY  
DINNERWARE  
IN  
EARTHEN  
COLORS**

The "tops" in todays decor, as well as the smartest thing you can do in table settings—"for fun or fashion," is to use dinnerware with earthen colors and textures.

For 25 years FRANKOMA has pioneered beautiful, Art Glazed dinnerware for the American table of discriminating taste. We have endeavored to be a "pace setter," rather than to follow tradition.

You can dress FRANKOMA "up or down," for it is both useful and beautiful, whatever the occasion. All the extra serving pieces, as well as the centerpiece and accessories, are made to match in color and texture—and they are ovenproof.



WESTWIND PATTERN, in Peach Glow, see Page 9



MAYAN-AZTEC PATTERN, in Desert Gold, see Page 11



PLAINSMAN PATTERN, in Woodland Moss, see Page 17

Front Cover:

JOHN FRANK  
*President-Designer*

JONIECE FRANK CALVERT  
*Ceramic Artist*

J. W. DAUGHERTY  
*Vice-President,  
Ceramic Engineer*





WAGON WHEELS PATTERN, in Prairie Green, see Page 15



LAZY BONES PATTERN, in Brown Satin, see Page 13

E. L. HAMILTON  
 MANUFACTURERS REPRESENTATIVE  
 28 MICHIGAN ST.  
 YUBA CITY, CALIF. 95991

FRANKOMA is ovenproof but does not claim to be flameproof. You will find it very durable and serviceable wherever china or pottery can be used. It is designed to be entirely satisfactory and we would appreciate letting the factory know of any deviation from this standard.

You are a welcomed guest at the factory any time. Should you come during working hours, we will be glad to conduct you through the plant to see FRANKOMA made. Prices subject to change without notice. Prices shown are retail. Prices may be slightly higher far East and far West.

**FRANKOMA POTTERY**

—on Old Kiln Road—

P. O. Box 789

Sapulpa, Oklahoma



No. C2 in Peach Glow



No. C3 in Desert Gold



No. C4 in White Sand



No. C6 in Onyx Black

**Frankoma's Unique Eight Colors**

**MUGS**—for coffee, tea, milk, chocolate, soup, soda pop, or — you name it.

Each an original by Frankoma



No. C5 in Brown Satin



No. C1 in Flame



No. C7 in Woodland Moss



No. C8 in Prairie Green

Each available in any of the above colors. (Sets of four of one kind in a gift box if requested.) 8 to 10 oz., any mug in flame \$1.50 each; any mug in any other color, \$1.00 each.

For any piece marked available in Flame, add 50%. They are made with a matt brown lining.